

wormhole switch™ CrossLink USB-C® Hub

JCH422



Scan for online user manual

- EN : Quick Installation Guide
 - DE : Kurzanleitung Für Installation
 - FR : Guide D'installation Rapide
 - IT : Guida rapida all'installazione
 - NL : Beknopte installatiehandleiding
 - ES : Guía De Instalación Rápida
 - PT : Guia de instalação rápida
 - SE : Snabbinstallationsguide
 - DK : Startvejledning
 - NO : Hurtiginstallasjonsveiledning
- FI: Pika-asennusopas
 - HU: Gyors telepítési útmutató
 - CZ: Rychlý průvodce instalací
 - RU: Руководство по быстрой установке
 - 日本語: クイックインストールガイド
 - 繁体中文: 快速安裝手冊
 - AR: عريسرال تتيبثتلا لى لى لى
 - KR: 빠른 설치 가이드

STOP!

If you have any problems with this product please contact our technical support team for assistance.

TECHNICAL SUPPORT

Customer Service : **888-988-0488**
 Technical Support : **888-689-4088**
 Email : **service@j5create.com**
 Service Hours : **Mon. - Fri. 10:00 - 18:00 E.S.T**

SOPORTE TÉCNICO
 Número gratuito: +1-888-988-0488
 Horas de operación:
 Lun - Vier : 10:00 -18:00 U.S.A.-E.S.T
 Correo electrónico: service@j5create

Kajjet Technology International B.V.
 Phone Number: +31-(0)6-2880 2882
 Address: Zomerdoorn 20,3068 MZ
 Rotterdam,Netherlands
 E-mail: service@j5create.com

TECHNISCHER SUPPORT
 Kostenloser Anruf bei :+1-888-988-0488
 Sprechstunden :
 Mon.-Frei. 10.00 – 18.00 U.S.A.-E.S.T
 E-mail : service@j5create.com

TECHNIKAI SEGÍTSÉG
 Vevőszolgálat (angol nyelven) :
 888-988-0488
 Technikai támogatás (angol nyelven) :
 888-689-4088
 Mon.-Frei. 10.00 – 18.00 U.S.A.-E.S.T
 E-mail : service@j5create.com

SUPPORT TECHNIQUE
 Numéro gratuit: +1-888-988-0488
 Heures d'ouverture :
 lun.-Ven. 10:00 – 18:00 U.S.A.-E.S.T
 Email : service@j5create.com

テクニカルサポート
 お客様相談センター : 03-4590-7650
 電子メール : j5_support@solnet.ne.jp
 テクニカルサポートやその他ご相談は下記の
 時間帯にございますようお願い申し上げます
 営業時間 平日 : 9:30~11:30/13:30~17:30

TECHNICKÁ PODPORA
 Zákaznická linka: 888-988-0488
 Technická podpora: 888-689-4088
 Mon.-Frei. 10.00 – 18.00 U.S.A.-E.S.T
 E-mail : service@j5create.com

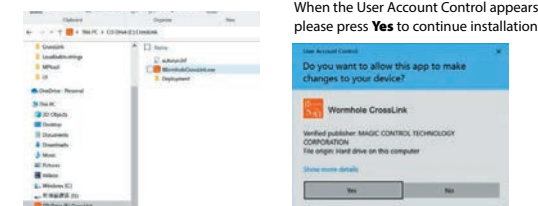
技術支援資訊
 美國客服專線 : +1-888-988-0488
 台灣客服專線 : +886-2-2269-5533#19
 營業時間 :
 星期一-星期五 10:00-18:00 (台灣時間)
 Email 信箱 : service.tw@j5create.com

USB-C and USB are trademarks of USB Implementers Forum, Inc., its affiliates or its respective owners, registered or used in many jurisdictions worldwide. Other trademarks and trade names may be used in this document to refer to either the entities claiming the marks and/or names or their products and are the property of their respective owners. All company, product and service names used are for identification purposes only. Use of these names, logos, and brands does not imply endorsement. We disclaim any interest in the marks of others.

■ Driver and app Installation on Windows® computer and iPad®/iPhone®:

Please install the driver and app on Windows® computer and iPad®/iPhone® that will be connected to the JCH422. In the future, please also remember to update the driver and app on both sides.

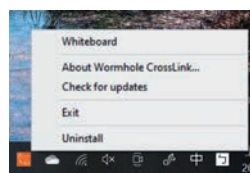
On Windows® computer:



Driver installation in process



Finish Installation



Wormhole CrossLink On iPad®/iPhone®:



■ Functions and how to use

After installed the app, open the app and you can control Display and Data sharing between the computer and iPad®/iPhone®.

Display Share (Windows® to iPad®/iPhone®)



Display Share (iPad®/iPhone® to Windows®)



EXTENDED MODE

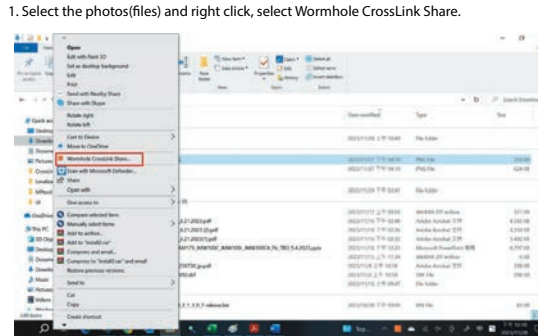
This feature allows iPad®/iPhone® to work as an Extended display of the on-board screen. The extended working space improves work efficiency.

MIRROR MODE

This feature allows the same contents of the on-board screen to be displayed (mirroring) on iPad®/iPhone®.

■ Data Sharing

This feature allows share the photos and files between two device. Windows® to iPad®/iPhone®

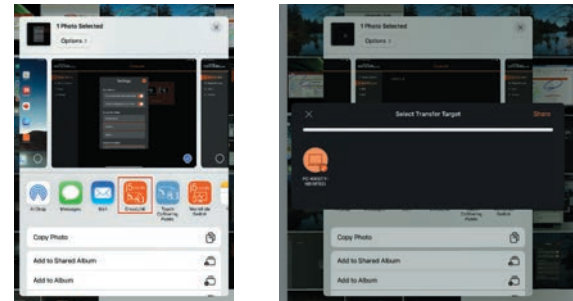


2. Click share,



iPad®/iPhone® to Windows®

- Select the photos/files and click share. Select the CrossLink app.
- Click "Share".

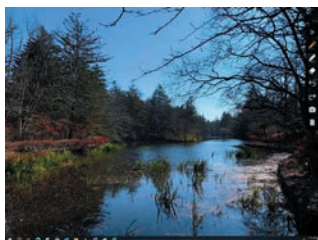


■ White Board

This feature allows you to make notes on a screen display. iPad® to Windows®



Windows® to iPad®



English

■ Features

- CROSS-DROP:**
 - Support file transfer like "Air Drop" easily transfer between iPhone®/iPad® and PC laptop.
- CROSS-DESKTOP:**
 - Support Duplicate (iPad® to windows®) and Extend (windows® to iPad®) modes in 2nd Display
 - Support Picture-in-Picture Windows® (PIP). PIP Windows® is Movable and Resizable.
 - Screen will rotate and resize automatically to fitting screen follows rotation
- CROSS-TOUCH:**
 - Support Virtual Multi-Touch and Pen when another computer is Tablet
 - Support gesture function from Windows® OS
 - Support handwriting, pen pressure (1024 levels), pen tilt and side-button on pen (such as eraser or selection function)
 - Easy-to-use markup tool, allow you add markups directly on your screen.
- HUB PORTS**
 - USB-C® Type-A male cable for Windows® host connection, and USB-C® male cable for USB-C® iPad®/iPhone® connection.
 - USB™ 3.2 Gen1 downstream port Type-A *1 and USB-C® *1 for peripheral (only work for Windows® host)

■ System Requirements

- Windows®**
- OS: Windows 10® or later
 - Available USB-C®/USB™ Type-A 5Gbps port is recommended
 - Hard disk capacity: at least 100MB
 - CPU - 8th Generation Intel® Core™ i5 Processors, 4 Cores at least
 - RAM - 8GB at least

iPad®

- OS: iPadOS® 17 or later
- iPad® series with USB-C® port
- iPad Pro® 11" 1st Gen or later
- iPad Pro® 12.9" 3rd Gen or later
- iPad Air® 4th Gen or later

iPhone®

- OS: iOS® 17 or later
- iPhone® 15 Pro, iPhone® 15 Pro Max, or later

Dutch

■ Kenmerken

- CROSS-DROP:**
 - Ondersteun bestandsoverdracht zoals "Air Drop" voor een gemakkelijke overdracht tussen iPhone®/iPad® en PC laptop.
- CROSS-DESKTOP:**
 - Ondersteunt dupliceren (iPad® naar Windows®) en uitbreiden (Windows® naar iPad®) modi op het 2e scherm.
 - Ondersteuning Picture-in-Picture Windows® (PIP). PIP Windows® is verplaatbaar en herschaalbaar.
 - Scherf zal draaien en formaat automatisch aanpassen aan passend scherm na rotatie
- CROSS-TOUCH:**
 - Ondersteuning Virtueel Multi-Touch en pen wanneer een andere computer Tablet is
 - Ondersteuning gebaar functie van Windows® OS
 - Admite escrita a mano, presión del lápiz (1024 niveles), inclinación del lápiz y botón lateral del lápiz (como borrador o función de selección)
 - Herramienta de marcado fácil de usar que le permite agregar marcas directamente en su pantalla.
- PUERTOS DEL CONCENTRADOR**
 - Cable USB-C® Tipo A macho para conexión de host Windows® y cable USB-C® macho para conexión USB-C® iPad®/iPhone®.
 - Puerto descendente USB™ 3.2 Gen1 Tipo A *1 y USB-C® *1 para periféricos (solo funciona para host Windows®)

■ Systemvereisten

- Windows®**
- SO: Windows 10® of posterior
 - Se recomienda un puerto USB-C®/USB™ tipo A de 5 Gbps disponible
 - Capacidad del disco duro: al menos 100 MB
 - CPU - Procesadores Intel® Core™ i5 de 8ª generación, 4 núcleos como mínimo.
 - RAM - 8 GB como mínimo

iPad®

- SO: iPadOS® 17 of later
- Serie iPad® con puerto USB-C®
- iPad® serie met USB-C® poort
- iPad Pro® 11 1e gen of later
- iPad Pro® 12.9" 3e gen of later
- iPad Air® 4e generatie of later

iPhone®

- SO: iOS® 17 of later
- iPhone® 15 Pro, iPhone® 15 Pro Max of later

Deutsch

■ Eigenschaften

- CROSS-DROP:**
 - Unterstützt Dateiübertragungen, wie "Air Drop", und überträgt mühelos zwischen iPhone®/iPad® und PC/Laptop.
- CROSS-DESKTOP:**
 - Unterstützt die Modi Duplizieren (iPad® nach Windows®) und Erweitern (Windows® nach iPad®) auf dem 2. Display
 - Unterstützt Bild-im-Bild-Funktion (PIP) von Windows®. PIP unter Windows® ist verschiebbar und in der Größe änderbar.
 - Der Bildschirm lässt sich drehen und sein Bild passt sich dabei automatisch der jeweilige Bildschirmgröße an
- CROSS-TOUCH:**
 - Unterstützt virtuellen Multi-Touch und Stift, wenn der andere Computer ein Tablet ist
 - Unterstützt Gestenfunktion des Betriebssystems Windows®
 - Unterstützt Handschrift, Stiftdruck (1024 Stufen), Stiftneigung und Seitentaste am Stift (z. B. Radier- oder Auswahlfunktion)
 - Einfach bedienbares Markup-Tool, sodass Sie Markups direkt auf dem Bildschirm hinzufügen können.
- HUB-ANSCHLÜSSE**
 - USB-C®-Kabel Typ A, männlich, für Verbindung mit Windows®-Host und USB-C®-Kabel, männlich, für Verbindung mit USB-C® iPad®/iPhone®.
 - USB™-Downstream-Anschluss 3.2 Gen1 Typ A *1 und USB-C® *1 für Peripheriegeräte (funktioniert nur für Windows®-Host)

■ Systemanforderung

- Windows®**
- Betriebssystem: Windows 10® oder aktueller
 - Verfügbare USB-C®-/USB™-Anschluss Typ A mit 5 Gb/s ist empfehlenswert
 - Kapazität der Festplatte: Mindestens 100 MB
 - CPU - Intel® Core™ i5-Prozessoren der 8. Generation, mindestens 4 Kerne
 - RAM - Mindestens 8 GB

iPad®

- Betriebssystem: iPadOS® 17 oder aktueller
- iPad®-Serie mit USB-C®-Anschluss
- 11-Zoll-iPad Pro® der 1. Generation oder aktueller
- 12,9-Zoll-iPad Pro® der 3. Generation oder aktueller
- iPad Air® der 4. Generation oder aktueller

iPhone®

- Betriebssystem: iOS® 17 oder aktueller
- iPhone® 15 Pro, iPhone® 15 Pro Max oder aktueller

Español

■ Características

- CROSS-DROP:**
 - Soporta transferencia de archivos como "Air Drop" y transfiera fácilmente entre iPhone®/iPad® y PC portátil.
- CROSS-DESKTOP:**
 - Admite los modos duplicar (de iPad® a Windows®) y extender (de Windows® a iPad®) en la 2ª pantalla
 - Admite Windows-em-Imagem (PIP). PIP Windows® es móvil y redimensionable.
 - La pantalla girará y cambiará de tamaño automáticamente para adaptarse a la rotación de la pantalla.
- CROSS-TOUCH:**
 - Admite Virtual Multi-Touch y Pen cuando el otro ordenador es Tableta
 - Admite función de gestos desde el sistema operativo Windows®
 - Admite escritura a mano, presión del lápiz (1024 niveles), inclinación del lápiz y botón lateral del lápiz (como borrador o función de selección)
 - Herramienta de marcado fácil de usar que le permite agregar marcas directamente en su pantalla.
- PUERTOS DEL CONCENTRADOR**
 - Cable USB-C® Tipo A macho para conexión de host Windows® y cable USB-C® macho para conexión USB-C® iPad®/iPhone®.
 - Puerto descendente USB™ 3.2 Gen1 Tipo A *1 y USB-C® *1 para periféricos (solo funciona para host Windows®)

■ Requisitos del Sistema

- Windows®**
- SO: Windows 10® o posterior
 - Se recomienda un puerto USB-C®/USB™ tipo A de 5 Gbps disponible
 - Capacidad del disco duro: al menos 100 MB
 - CPU - Procesadores Intel® Core™ i5 de 8ª generación, 4 núcleos como mínimo.
 - RAM - 8 GB como mínimo

iPad®

- SO: iPadOS® 17 o posterior
- Serie iPad® con puerto USB-C®
- iPad Pro® 11" 1ª generación o posterior
- iPad Pro® 12,9" 3ª generación o posterior
- iPad Air® 4ª generación o posterior

iPhone®

- SO: iOS® 17 o posterior
- iPhone® 15 Pro, iPhone® 15 Pro Max o posterior

Français

■ Caractéristiques

- CROSS-DROP:**
 - Preise en charge du transfert des fichiers comme « Air Drop » pour faciliter le transfert entre un iPhone®/iPad® et un ordinateur portable
- CROSS-DESKTOP:**
 - Preise en charge des modes Duplication (iPad® vers Windows®) et Extension (Windows® vers iPad®) sur un 2ème écran
 - Prend en charge le mode Image en image de Windows® (PIP) Les fenêtres PIP Windows® sont déplaçables et redimensionnables
 - L'écran tourne et se redimensionne automatiquement pour suivre la rotation de l'écran
- CROSS-TOUCH:**
 - Preise en charge des fonctions virtuelles multi-tactile et du stylet lorsqu'un autre ordinateur est connecté à la tablette
 - Preise en charge de la fonction de gestes du SE Windows®
 - Preise en charge de l'écriture à la main, de la pression du stylet (1024 niveaux), de l'inclinaison et des boutons latéraux du stylet (tels que la gomme ou la fonction de sélection)
 - Outil de marquage facile à utiliser, permettant d'ajouter des marquages directement sur l'écran
- PORTS HUB**
 - Câble USB-C® type A mâle pour la connexion à un hôte Windows®, et câble USB-C® mâle pour la connexion USB-C® à un iPad®/iPhone®
 - Port descendant USB™ 3.2 Gen1 type A *1 et USB-C® *1 pour périphérique (fonctionne uniquement pour l'hôte Windows®)

■ Configuration Recommandée

- Windows®**
- Système opératoire: Windows 10® ou version ultérieure
 - SE : Windows 10® ou version ultérieure
 - Un port USB-C®/USB™ type A 5Gbps disponible est recommandé.
 - Capacité du disque dur : 100 Mo minimum
 - CPU - Processeurs Intel® Core™ i5 de 8ème génération, 4 cœurs au minimum
 - RAM - 8 Go minimum

iPad®

- Système opératoire: iPadOS® 17 ou version ultérieure
- SE : iPadOS® 17 ou version ultérieure
- Série iPad® avec port USB-C®
- iPad Pro® 11" 1ª Gen ou version successive
- iPad Pro® 12,9" 3ª Gen ou version successive
- iPad Air® 4ª Gen ou version successive

iPhone®

- Système opératoire: iOS® 17 ou version ultérieure
- iPhone® 15 Pro, iPhone® 15 Pro Max, ou version ultérieure

Italiano

■ Features

- CROSS-DROP:**
 - Supporta il trasferimento di file come "Air Drop" per trasferire facilmente tra iPhone®/iPad® e laptop.
- CROSS-DESKTOP:**
 - Supporta modalità Duplica (da iPad® a Windows®) ed Estendi (da Windows® a iPad®) sul 2° display
 - Supporta Picture-in-Picture Windows® (PIP). PIP Windows® è mobile e ridimensionabile.
 - Lo schermo ruota e si ridimensiona automaticamente per adattarsi allo schermo seguendo la rotazione
- CROSS-TOUCH:**
 - Supporta Multi-touch virtuale e Penna quando un altro computer è Tablet
 - Supporta la funzione gesto dal sistema operativo Windows®
 - Supporta la scrittura a mano, la pressione della penna (1024 livelli), l'inclinazione della penna e il tasto laterale sulla penna (come gomma o funzione di selezione)
 - Strumento di marcatura facile da usare, consente di aggiungere marcature direttamente sullo schermo.
- PORTS HUB**
 - Cavo USB-C® tipo A maschio per collegamento host Windows® e cavo USB-C® maschio per collegamento USB-C® iPad®/iPhone®.
 - Porta USB™ 3.2 Gen1 downstream tipo A *1 e USB-C® *1 per periferiche (funziona solo con host Windows®)

■ Requisiti di sistema

- Windows®**
- Sistema operativo: Windows 10® o versione successiva
 - SE : Windows 10® o versione successiva
 - Si consiglia la porta USB-C®/USB™ tipo A 5 Gbps disponibile
 - Capacità disco rigido: almeno 100 MB
 - CPU - Processori intel® Core™ i5 8ª generazione, almeno 4 core
 - RAM - Almeno 8 GB

iPad®

- Sistema operativo: iPadOS® 17 o versione successiva
- Serie iPad® con porta USB-C®
- iPad Pro® 11" 1ª Gen o versione successiva
- iPad Pro® 12,9" 3ª Gen o versione successiva
- iPad Air® 4ª Gen o versione successiva

iPhone®

- Sistema operativo: iOS® 17 o versione successiva
- iPhone® 15 Pro, iPhone® 15 Pro Max o versione successiva

FCC Information

This equipment has been tested and found to comply with the limits for a Class B digital device, pursuant to part 15 of the FCC Rules. These limits are designed to provide reasonable protection against harmful interference in a residential installation. This equipment generates, uses and can radiate radio frequency energy and, if not installed and used in accordance with the instructions, may cause harmful interference to radio communications. However, there is no guarantee that interference will not occur in a particular installation. If this equipment does cause harmful interference to radio or television reception, which can be determined by turning the equipment off and on, the user is encouraged to try to correct the interference by one or more of the following measures:

- Reorient or relocate the receiving antenna.
 - Increase the separation between the equipment and receiver.
 - Connect the equipment into an outlet on a circuit different from that to which the receiver is connected.
 - Consult the dealer or an experienced radio/TV technician for help.
- This device complies with part 15 of the FCC Rules. Operation is subject to the following two conditions: (1) This device may not cause harmful interference, and (2) this device must accept any interference received, including interference that may cause undesired operation.

Changes or modifications not expressly approved by the party responsible for compliance could void the user's authority to operate this device.

限用物質含有情況標示聲明書

Declaration of the Presence Condition of the Restricted Substances Marking

設備名稱： CrossLink iPhone/iPad對Windows視訊資料分享器
 Equipment name

型號 (型式)： JCH422

Type designation (Type)

單元Unit	鉛 (Pb)	汞 (Hg)	鎘 (Cd)	六價鉻 (Hexavalent chromium(Cr ⁶⁺))	多溴聯苯 (Polybrominated biphenyls(PBB))	多溴二苯醚 (Polybrominated diphenyl ethers (PBDE))
電路板	○	○	○	○	○	○
外殼	○	○	○	○	○	○
線材	○	○	○	○	○	○
配件	○	○	○	○	○	○

備考1. "超出0.1 wt%"及"超出0.01 wt%"係指限用物質之百分比含量超出百分比含量基準值。
 Note 1: "Exceeding 0.1 wt%" and "exceeding 0.01 wt%" indicate that the percentage content of the restricted substance exceeds the reference percentage value of presence condition.
 備考2. "○"係指該項限用物質之百分比含量未超出百分比含量基準值。
 Note 2: "○" indicates that the percentage content of the restricted substance does not exceed the percentage of reference value of presence.
 備考3. "-"係指該項限用物質為排除項目。
 Note 3: "-" indicates that the restricted substance corresponds to the exemption.

この装置は、クラスB機器です。この装置は、住宅環境で使用することを目的としていますが、この装置がラジオやテレビジョン受信機に近接して使用されると、受信障害を引き起こすことがあります。取扱説明書に従って正しい取り扱いをして下さい。

VCCI – B

Canada ICES-003 (B) / NMB-003 (B)

凱捷國際科技股份有限公司

236 新北市土城區忠孝路109號8樓(永寧科技園區A棟)

KAIJET TECHNOLOGY INTERNATION CORPORATION

8F., No109, Zhongcheng Rd., Tucheng Dist., New Taipei City, 236, Taiwan.

Swedish

- Funktioner**
- CROSS-DROP:**
 - Stöd för filöverföring som "Air Drop" för enkel överföring mellan iPhone® / iPad® och bärbar PC-dator.
- CROSS-DESKTOP:**
 - Stöd för lågena Duplicera (iPad® till Windows®) och Utöka (Windows® till iPad®) som andraskärm
 - Stöd för bild-i-bild i Windows® (PIP). PIP Windows® är flyttbar och anpassningsbar.
 - Skärmen roterar och ändrar storlek automatiskt för att passa och skärmen följer rotationen
- CROSS-TOUCH:**
 - Stöd för virtuell Multi-Touch och penna när den andra datorn är en surfplatta
 - Stöd för gestfunktion från Windows® OS
 - Stöd för händskrift, penntryck (1024 nivåer), pennlutning och sidoknapp på pennan (t.ex. radergummi eller markeringsfunktion)
 - Lättanvärt markeringsverktyg som låter dig lägga till markeringar direkt på skärmen.
- HUBB-PORTAR**
 - USB-C® typ-A hankabel för Windows®-värdanslutning och USB-C® hankabel för USB-C® iPad® /iPhone®-anslutning.
 - USB™ 3.2 Gen1 nedströmsport Typ-A *1 och USB-C® *1 för kringutrustning (fungerar endast för Windows®-värd)

- Systemkrav**
- Windows®
- Operativsystem: Windows 10® eller senare
- Tillgänglig USB-C®/USB™ Type-A 5Gbps-port rekommenderas
- Harddiskkapacitet: minst 100 MB
- CPU - 8e generationens Intel® Core™ i5-processorer, minst 4 kärnor
- RAM-minne - minst 8 GB

- iPad®
- Operativsystem: iPadOS® 17 eller senare
- iPad® -serien med USB-C®-port
- iPad Pro® 11" 1. generationen eller senare
- iPad Pro® 12,9" 3:e generation eller senare
- iPad Air® 4.e generationen eller senare

- iPhone®
- Operativsystem: iOS® 17 eller senare
- iPhone® 15 Pro, iPhone® 15 Pro Max eller senare

日文

- 特徴**
- 簡単なデータ移行:
 - Air Drop®のようなファイル転送をサポートし、iPhone®/iPad®とPCラップトップ間で簡単にファイルを転送できます。
- iPhone/iPadを外部モニター化&画面複製できる
 - 2番目のディスプレイでのDuplicate (iPad®からwindows®へ)および Extend (windows®からiPad®へ) モードをサポートします。Picture-in-Picture Windows® (PIP) をサポートします。PIP Windows®は移動およびリサイズ可能です。画面は回転および自動的にリサイズされ、回転に従って画面に適合します。
- タッチ機能共有:
 - もう1台のコンピュータがタブレットの場合、仮想マルチタッチとペンをサポートします、Windows® OSからのジェスチャー機能をサポートします。手書き、ペン圧 (1024レベル)、ペンの傾き、およびペンのサイドボタン (消しゴムや選択機能など) をサポートします。使いやすいマークアップツールで、画面上に直接マークアップを追加できます。
- USB/ハブポート拡張
 - ペリフェラル用のUSB™ 3.2 Gen1ダウンストリームポートType-A *1およびUSB-C® *1をサポートします (Windows®ホストのみで作作します)。

■ システム要件

- Windows®
- OS: Windows 10®以降
- 利用可能なUSB-C®/USB™ Type-A 5Gbpsポートが推奨されます
- ハードディスク容量:少なくとも100MB
- CPU - 第8世代Intel® Core™ i5プロセッサ、4コア以上
- RAM - 少なくとも8GB

- iPad®
- OS: iPadOS® 17以降
- USB-C®ポートを備えたiPad®シリーズ
- iPad Pro® 11インチ 1st Gen以降
- iPad Pro® 12.9インチ 3rd Gen以降
- iPad Air® 4th Gen以降

- iPhone®
- OS: iOS® 17以降
- iPhone® 15 Pro, iPhone® 15 Pro Max、またはそれ以降

Dansk

- Egenskaber**
- CROSS-DROP:**
 - Med understøttelse af filoverførsel, såsom "Air Drop"®, kan du let overføre mellem iPhone®/iPad® og en bærbar computer.
- CROSS-DESKTOP:**
 - Understøtter duplikeringsfunktioner (iPad® til Windows®) og Udvid (Windows® til iPad®) på 2. skærm
 - Understøtter Billede-i-billede i Windows® (PIP). Billederne i PIP Windows® kan flyttes og deres størrelse kan ændres.
 - Skærmen drejes og dens størrelse ændres automatisk, så den passer til skærmen, når den drejes
- CROSS-TOUCH:**
 - Understatter Virtuel Multitryk og Pen, hvis den anden computer er en tablet
 - Understøtter betjening med fingrene, som i Windows®
 - Understøtter håndskrift, pentryk (1024 nivåer), penvinkel og sideknap på pennen (såsom viskelæder eller valgfunktion)
 - Brugervenligt markeringsværktøj, der giver dig mulighed for at lave markeringer direkte på skærmen.
- HUB-PORTE**
 - USB-C® Type-A hankabel til Windows®-værtsforbindelse og USB-C® hankabel til USB-C® iPad®/iPhone®-forbindelse.
 - USB™ 3.2 Gen1 downstream-port Type-A *1 og USB-C® *1 til eksternt udstyr (virker kun med en Windows®-vært)

- Systemkrav**
- Windows®
- Operativsystem: Windows 10® eller nyere
- En ledig USB-C®/USB™ Type-A 5 Gbps-port anbefales
- Harddiskkapacitet: Minst 100 MB
- CPU - 8. generasjons Intel® Core™ i5-processorer, mindst 4 kerner
- RAM - minst 8 GB

- iPad®
- Operativsystem: iPadOS® 17 eller nyere
- iPad® -serien med USB-C®-port
- iPad Pro® 11" 1. generasjon eller nyere
- iPad Pro® 12,9" 3. Gen eller nyere
- iPad Air® 4. Gen eller nyere

- iPhone®
- Operativsystem: iOS® 17 eller nyere
- iPhone® 15 Pro, iPhone® 15 Pro Max eller nyere

Norsk

- Funksjoner**
- CROSS-DROP:**
 - Støtter filoverføring som «Air Drop» med enkelt overføring mellom PC-kannettaven tietokoneen välillä.
- CROSS-DESKTOP:**
 - Støtter duplisert modus (iPad® til Windows®) og utvidet (Windows® til iPad®) som sekundær skjerm
 - Støtter bilde-i-bilde-Windows® (PIP). Bilde-i-bilde-Windows® kan flyttes og endres størrelse på.
 - Skjermen roterer og endrer størrelsen automatisk for å passe skjermen etter rotasjonen
- CROSS-TOUCH:**
 - Støtter virtuell flerberøring og penn når den andre datamaskinen er nettbrett
 - Støtter beveegelsesfunksjonalitet i Windows®
 - Støtter håndskrift, penntrykk (1024 nivåer), pennevinkel og sideknapp på pennen (som viskelær eller valgfunksjon)
 - Markeringsverktøy som er enkel å bruke: Legg til markeringer direkte på skjermen.
- HUBENS PORTER**
 - USB-C® Type-A hankabel for Windows®-verstillkobling, og USB-C® hankabel for USB-C® iPad®/iPhone®-tilkobling.
 - USB™ 3.2 Gen1 nedstrømsport Type-A *1 og USB-C® *1 for eksternt utstyr (fungerer bare med Windows®-vært)

- Systemkrav**
- Windows®
- Operativsystem: Windows 10® eller nyere
- Tilgjengelig USB-C®/USB™ Type-A 5 Gbps-port anbefales
- Harddiskkapasitet: Minst 100 MB
- CPU - 8. generasjons Intel® Core™ i5-processor, minst 4 kjerner
- RAM - minst 8 GB

- iPad®
- OS: iPadOS® 17 eller nyere
- iPad® -serien med USB-C®-port
- iPad Pro® 11" 1. generasjon eller nyere
- iPad Pro® 12,9" 3. generasjon eller nyere
- iPad Air® 4. generasjon eller nyere

- iPhone®
- Operativsystem: iOS® 17 eller nyere
- iPhone® 15 Pro, iPhone® 15 Pro Max eller nyere

Suomi

- Ominaisuudet**
- CROSS-DROP:**
 - Tiedostojen siirron tuki, kuten "Air Drop"® helppo siirto iPhone® / iPad® ja PC-kannettavan tietokoneen välillä.
- CROSS-DESKTOP:**
 - Tuki Duplicate (iPad® to windows®) ja Extend (windows® to iPad®) -tiloille 2. näytössä
 - Tuki Picture-in-Picture Windows® (PIP). PIP Windows® on siirrettävissä ja muutettavissa.
 - Näyttö kiertyy ja muuttaa kokoa automaattisesti näytön asentamisen näytön kiertäen seuranen
- CROSS-TOUCH:**
 - Tuki virtuaaliselle monioikeusnäytölle ja kynälle, kun toinen tietokone on tabletti
 - Stukee Windows® OS:n etoleimintoa
 - Tukee käsinkirjoitusta, kynän painetta (1024 tasoa), kynän kallistusta ja kynän sivupainiketta (kuten pyyhkeumi tai valintaominto)
 - Helpokäyttöinen merkintäväkälä, jonka avulla voit lisätä merkintöjä suoraan näytöllesi.
- HUB-PORTIT**
 - USB-C® Type-A uroskaapeli Windows® -isäntäliitäntää varten ja USB-C® uroskaapeli USB-C® iPad®/iPhone® -liitäntää varten.
 - USB™ 3.2 Gen1 A-tyyppi *1 ja USB-C® *1 -portti oheislaitteita varten (toimii vain Windows®-isännän kanssa)

- Järjestelmävaatimukset**
- Windows®
- OS: Windows 10® tai uudempi
- Käytettävissä oleva USB-C®/USB™ Type-A 5 Gbps -portti on suositeltava
- Kiintolevyn kapasiteetti: vähintään 100 Mt
- Suoritin - 8. sukupolven Intel® Core™ i5 -prossessorit, vähintään 4 ydintä
- RAM - muistia - vähintään 8GB

- iPad®
- Käyttöjärjestelmä: iPadOS® 17 tai uudempi
- iPad® -sarja, jossa on USB-C®-portit
- iPad Pro® 11" 1. sukupolvi tai uudempi
- iPad Pro® 12,9" 3rd Gen tai uudempi sukupolvi
- iPad Air® 4. sukupolvi tai uudempi

- iPhone®
- Operativsystem: iOS® 17 tai uudempi
- iPhone® 15 Pro, iPhone® 15 Pro Max tai uudempi versio

Magyarország

- Jellemzők**
- CROSS-DROP:**
 - Támogatja a fájeltvitelt, például az „Air Drop”® egyszerű átvitelt az iPhone®/iPad® és PC laptop között.
- CROSS-DESKTOP:**
 - Duplikálás (iPad® és Windows® között) és Kiterjesztés (Windows® és iPad® között) módok támogatása a 2. kijelzőn
 - Kép a kében Windows® (PIP) támogatása. A PIP Windows® ablakok mozgathatók és áthelyezhetők.
 - A képernyő automatikusan elfordul és átméreteződik a képernyőhöz illeszkedve.
- CROSS-TOUCH:**
 - Virtuális Multi-Touch és érintőtoll támogatás, amikor a másik számítógép egy táblagé
 - A Windows® operációs rendszer gesztus funkciójának támogatása
 - Támogatja a kézírást, a tollnyomást (1024 szint), a toll dőlését és a toll oldalós gombját (például radír vagy kiválasztási funkció).
 - Könyhen használható jelölőeszköz, amely lehetővé teszi a jelölések hozzáadását közvetlenül a képernyőn.
- ELOSZTÓ PORTOK**
 - USB-C® Type-A dugós kábel Windows® gazdagép-kapcsolathoz, illetve USB-C® dugós kábel USB-C® iPad®/iPhone®-kapcsolathoz.
 - USB™ 3.2 Gen1 downstream aljzat Type-A *1 és USB-C® *1 perifériákhoz (csak Windows® gazdagéppel működik)

- Rendszerkövetelmények**
- Windows®
- Operációs rendszer: Windows 10® vagy újabb verzió
- Szabad USB-C®/USB™ Type-A 5 Gb/s aljzat ajánlott
- Merevlemez-kapacitás: legakább 100 MB
- CPU - 8. generációs Intel® Core™ i5 processzorok, legalább 4 maggal
- RAM - legalább 8 GB

- iPad®
- Operációs rendszer: iPadOS® 17 vagy újabb
- iPad®-sorozat USB-C®-aljzattal
- iPad Pro® 11" 1. generációs vagy újabb
- iPad Pro® 12,9" 3. generációs vagy újabb
- iPad Air® 4. generációs vagy újabb

- iPhone®
- Operációs rendszer: iOS® 17 vagy újabb
- iPhone® 15 Pro, iPhone® 15 Pro Max vagy újabb

Русский

LIMITED WARRANTY

J5create offers a limited 2-year warranty. User’s wear & tear damage is not included. The user shall call or email J5create customer service with the defect information of the product and obtain a return authorization number. Users are responsible for one-way return freight cost and we will take care of one-way freight back. In order to obtain a return authorization number, users should have the following information handy when calling or emailing the service team:

(i) a copy of the original purchase invoice to verify your warranty

(ii) a product serial number

(iii) a description of the problem

(iv) customer’s name, address, and telephone number

J5create does not warrant that the operation of the product will be uninterrupted or error-free. J5create is not responsible for damage arising from failure to follow instructions relating to the product’s use. This warranty does not apply to: (a) consumable parts, unless damage has occurred due to a defect in materials or workmanship; (b) cosmetic damage, including but not limited to scratches, dents, and broken plastic on ports; (c) damage caused by use with non-J5create products; (d) damage caused by natural disasters; (e) damage caused by human misuse (lost, accident, abuse, misuse or other external causes); (f) damage caused by operating the product outside the permitted or intended uses described by J5create; (g) damage caused by service (including upgrades and expansions) performed by anyone who is not a representative of J5create or a J5create Authorized Service Provider; (h) a product or part that has been modified to alter functionality or capability without the written permission of J5create; or (i) if any J5create serial number on the product has been removed or defaced. If such a situation occurs, J5create will calculate the cost of materials and repair for your reference. This warranty is given by J5create in lieu of any other warranties expressed or implied.

LIMITATION OF WARRANTY

THIS WARRANTY GIVES YOU SPECIFIC LEGAL RIGHTS, AND YOU MAY HAVE OTHER RIGHTS THAT VARY FROM STATE TO STATE (OR BY COUNTRY OR PROVINCE). OTHER THAN AS PERMITTED BY LAW, J5CREATE DOES NOT EXCLUDE, LIMIT OR SUSPEND OTHER RIGHTS YOU MAY HAVE, INCLUDING THOSE THAT MAY ARISE FROM THE NONCONFORMITY OF A SALES CONTRACT. FOR A FULL UNDERSTANDING OF YOUR RIGHTS YOU SHOULD CONSULT THE LAWS OF YOUR COUNTRY, PROVINCE OR STATE. TO THE EXTENT NOT PROHIBITED BY LAW IN YOUR STATE, PROVINCE, JURISDICTION OR COUNTRY, THIS WARRANTY AND THE REMEDIES SET FORTH ARE EXCLUSIVE AND IN LIEU OF ALL OTHER WARRANTIES, REMEDIES AND CONDITIONS, WHETHER ORAL, WRITTEN, STATUTORY, EXPRESS OR IMPLIED.

J5CREATE’S RESPONSIBILITY FOR MALFUNCTIONS AND DEFECTS IN HARDWARE AND/OR SOFTWARE IS LIMITED TO REPAIR OR REPLACEMENT AS SET FORTH IN THIS WARRANTY. J5CREATE’S LIABILITY DOES NOT EXTEND BEYOND THE REMEDIES PROVIDED FOR IN THIS LIMITED WARRANTY, AND J5CREATE DOES NOT ACCEPT LIABILITY FOR CONSEQUENTIAL OR INCIDENTAL DAMAGES, FOR THIRD-PARTY CLAIMS AGAINST YOU FOR DAMAGES, FOR PRODUCTS NOT BEING AVAILABLE FOR USE, OR FOR LOST OR DAMAGED DATA OR SOFTWARE. J5CREATE DOES NOT WARRANT THAT THE OPERATION OF ANY J5CREATE PRODUCT WILL BE UNINTERRUPTED OR ERROR FREE.

J5CREATE’S LIABILITY IN ANY SITUATION WILL BE NO MORE THAN THE AMOUNT YOU PAID FOR THE SPECIFIC PRODUCT THAT IS THE SUBJECT OF A CLAIM. THIS IS THE MAXIMUM AMOUNT FOR WHICH WE ARE RESPONSIBLE.

EXCEPT FOR THE EXPRESS WARRANTIES CONTAINED IN THIS WARRANTY AND TO THE EXTENT NOT PROHIBITED BY LAW, J5CREATE DISCLAIMS ALL OTHER WARRANTIES AND CONDITIONS, EXPRESS OR IMPLIED, STATUTORY OR OTHERWISE, INCLUDING WITHOUT LIMITATION, WARRANTIES OF MERCHANTABILITY, MERCHANTABILITY QUALITY AND FITNESS FOR A PARTICULAR PURPOSE AND WARRANTIES AND CONDITIONS AGAINST HIDDEN OR LATENT DEFECTS. SOME STATES, PROVINCES, JURISDICTIONS OR COUNTRIES DO NOT ALLOW DISCLAIMERS OF IMPLIED WARRANTIES AND CONDITIONS, SO THIS DISCLAIMER MAY NOT APPLY TO YOU.

TO THE EXTENT SUCH WARRANTIES AND CONDITIONS CANNOT BE DISCLAIMED UNDER THE LAWS OF THE UNITED STATES, CANADA (AND ITS PROVINCES) OR OTHERWISE, J5CREATE LIMITS THE DURATION AND REMEDIES OF SUCH WARRANTIES AND CONDITIONS TO THE DURATION OF THIS EXPRESS LIMITED WARRANTY AND, AT J5CREATE’S OPTION, REPAIR OR REPLACEMENT SERVICES. SOME STATES, PROVINCES, JURISDICTIONS OR COUNTRIES MAY NOT ALLOW LIMITATIONS ON HOW LONG AN IMPLIED WARRANTY OR CONDITION MAY LAST, SO THE LIMITATION DESCRIBED ABOVE MAY NOT APPLY TO YOU.

NO WARRANTIES OR CONDITIONS, WHETHER EXPRESS OR IMPLIED, WILL APPLY AFTER THE LIMITED WARRANTY PERIOD HAS EXPIRED. SOME STATES, PROVINCES, JURISDICTIONS OR COUNTRIES DO NOT ALLOW LIMITATIONS ON HOW LONG AN IMPLIED WARRANTY OR CONDITION LASTS, SO THIS LIMITATION MAY NOT APPLY TO YOU.

WARRANTY SUPPORT ONLY APPLIES WHEN THE COVERED PRODUCT IS LOCATED WITHIN THE COUNTRY IN WHICH J5CREATE ORIGINALLY SOLD THE SYSTEM, AS REFLECTED IN J5CREATE’S RECORDS. IF YOU NEED SUPPORT FOR THE PRODUCT OUTSIDE OF THE COUNTRY OF ORIGIN (FOR EXAMPLE, WHILE TRAVELING, OR IF THE SYSTEM HAS BEEN RELOCATED TO A NEW COUNTRY), THEN J5CREATE MAY OFFER YOU OTHER SUPPORT OPTIONS FOR AN ADDITIONAL CHARGE.

For more information please visit our website at http://www.j5create.com

Copyright © 2024 J5create. All rights reserved. All trade names are registered trademarks of their respective owners. Features and specifications are subject to change without notice. Product may not be exactly as shown in the diagrams.

USB and USB-C are trademarks of USB Implementers Forum, Inc., its affiliated or its respective owners, registered or used in many jurisdictions worldwide. Windows is a trademark of Microsoft Corp., its affiliated or its respective owners, registered or used in many jurisdictions worldwide. Other trademarks and trade names may be used in this document to refer to either the entities claiming the marks and/or names or their products and are the property of their respective owners. All company, product and service names used are for identification purposes only. Use of these names, logos, and brands does not imply endorsement. We disclaim any interest in the marks of others.

