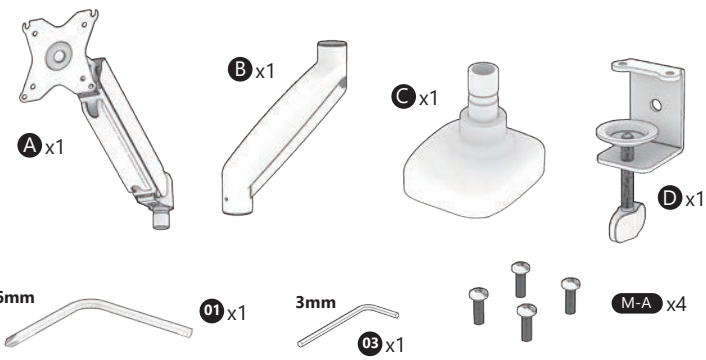
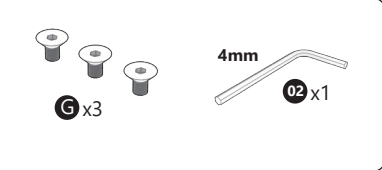


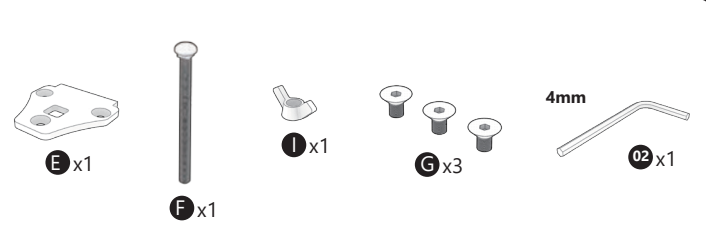
Content



• Clamp Installation Pack



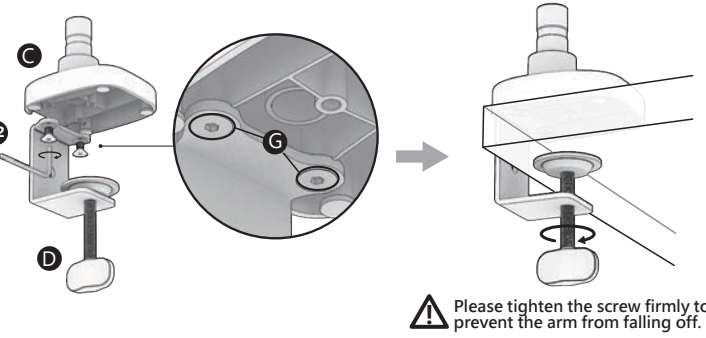
• Grommet Installation Pack



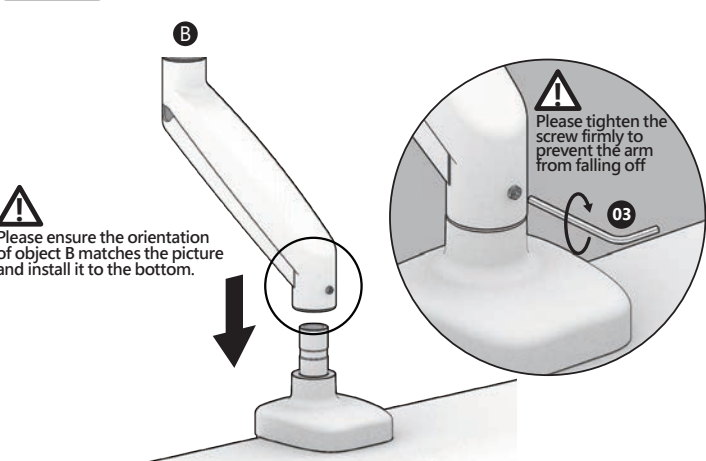
Step.01

• Clamp Installation

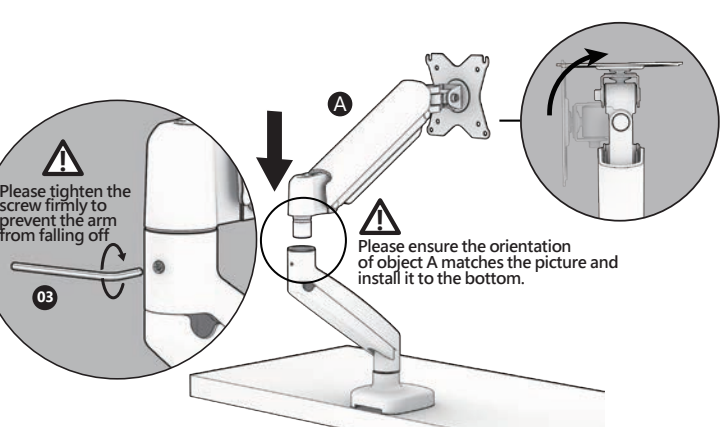
※If you prefer grommet installation please look at the "Grommet Installation" section at the right end of the manual.



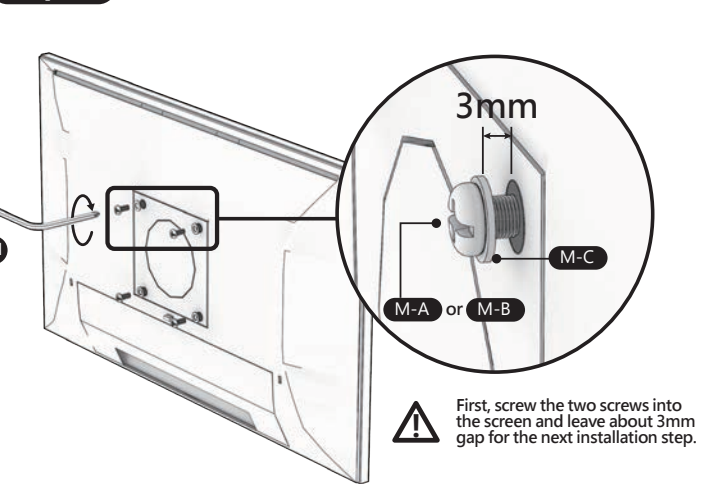
Step.02



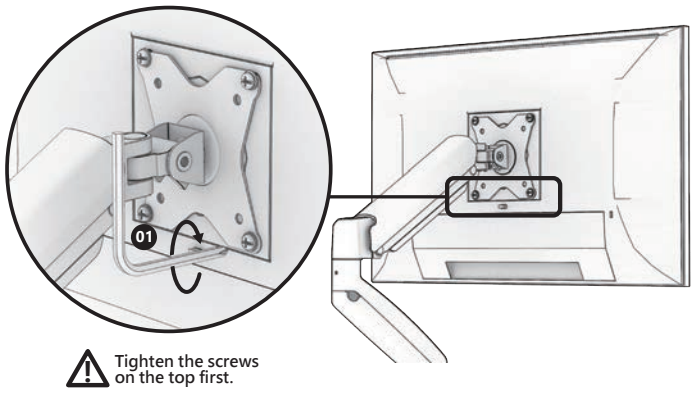
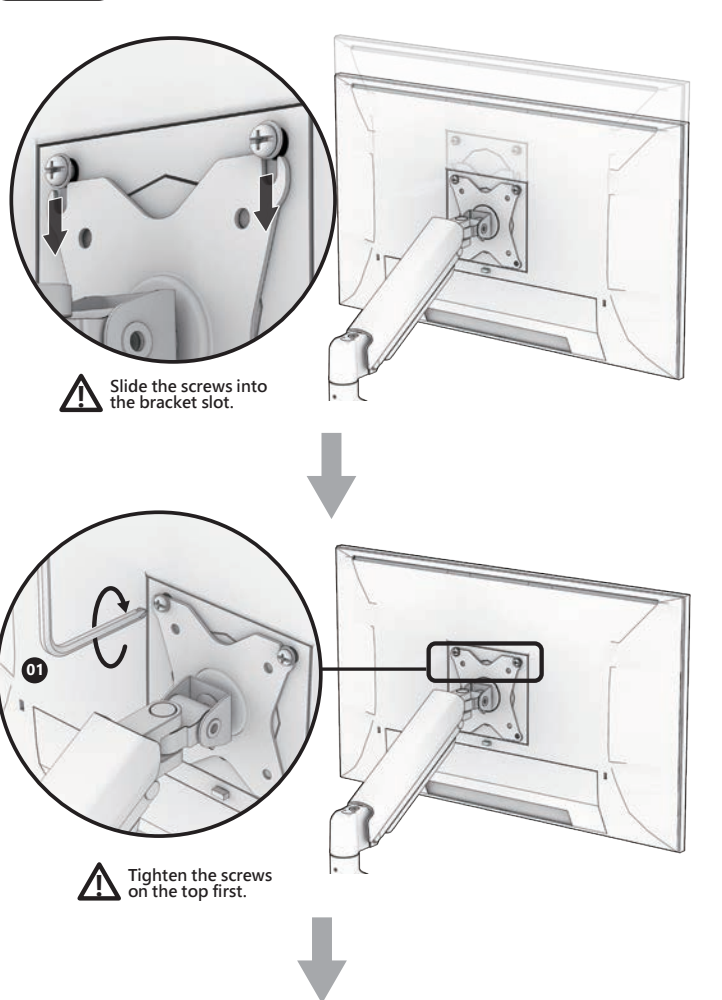
Step.03



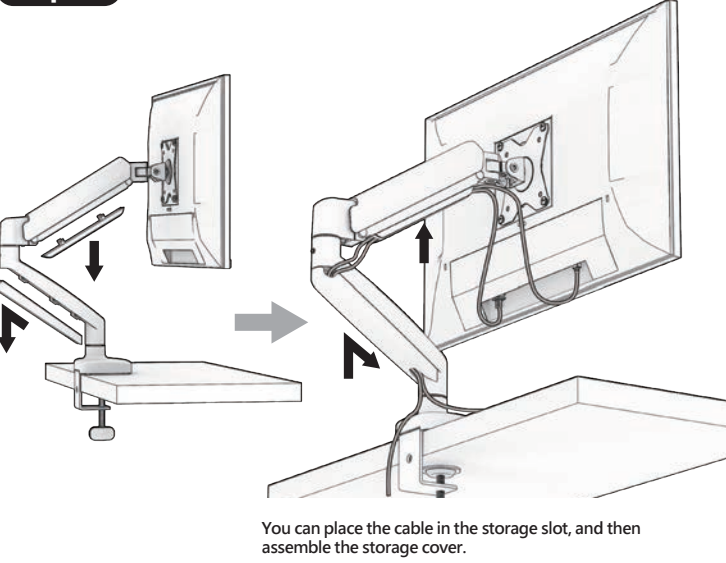
Step.04



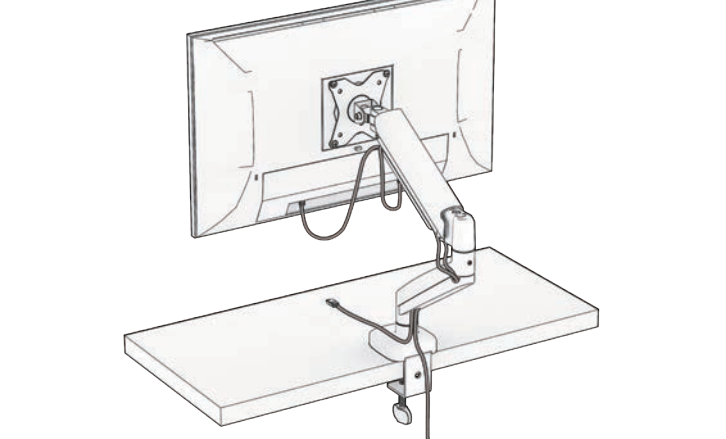
Step.05



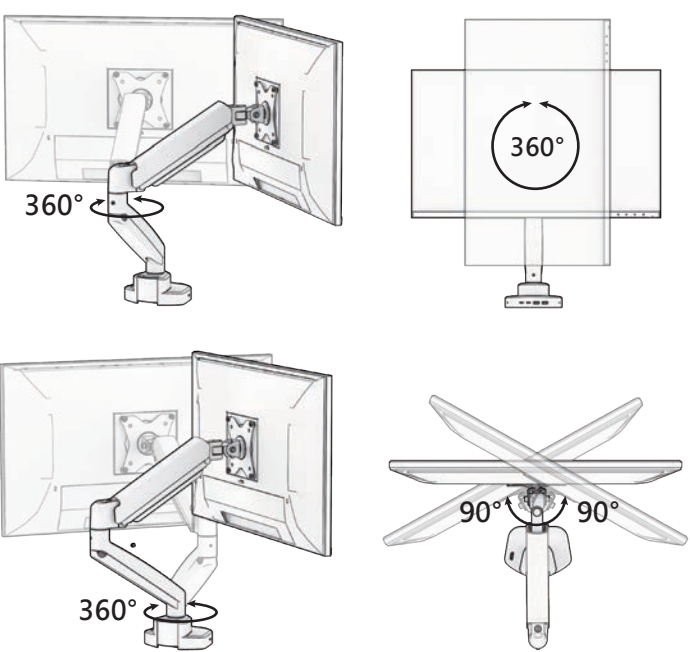
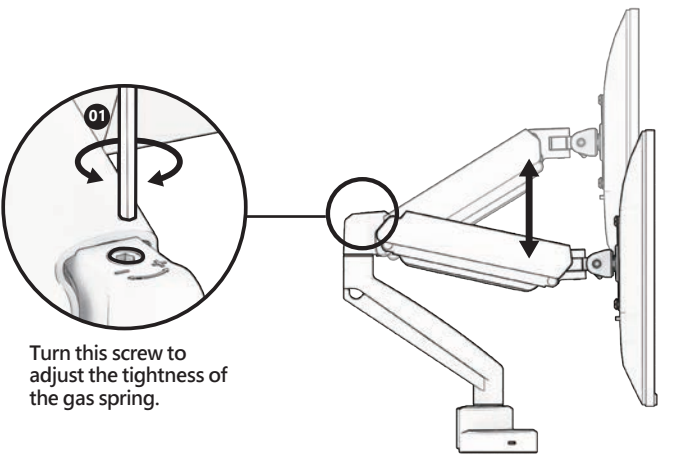
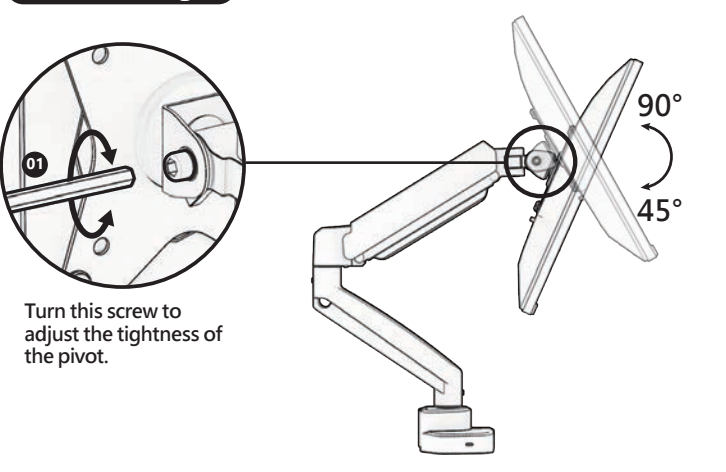
Step.06



Complete



Movable Angle



• Grommet Installation

※The table needs to have a hole or you can drill a hole yourself.

